

# STOP WASTING TIME LABELLING BY HAND

GO fast, easy, and accurate with

## DISPENSA-MATIC Label Dispensers



**1. Bottle-Matic** - 10" or 16" width Cylinder labeling machine. Label any cylindrical object fast and accurately FRONT AND BACK from .5" to 6" dia. at speeds of 1200 Pcs. Per hour!

**Bottle-Matic** is the perfect machine for labeling your cylindrical objects! It can wrap your bottles, cans, tubes, and jars by simply pressing the foot-switch! We can even do tapered objects without customizing!

**NOW!** Available with the new "Auto-Matic" labeling option (\$125) With this new option, you can just insert your bottle and the labeler automatically activates. Foot switch still included, but not needed!

**Single Label** (10" \$2,160) (16" \$2,295)

**Front and Back** (10" \$2,694) (16" \$2,829)

Shown with optional waste re-winder, \$50



**2. Flex+Matic** - 16" width flat labeling machine. Label any flat object fast and accurately up to 1/4" thick at speeds up to 1000 Pcs. Per hour!

**Flex+Matic** is the perfect machine for labeling your flat objects! It can label envelopes, plastic bags (even with zipper), CD cases, PCBs, unfilled flexible packaging, etc. Simply insert into the machine! Adjust guides for vertical placement, adjust digital circuit for horizontal placement.

**Flex+Matic** requires 7/8" from the leading edge to the start of the label.

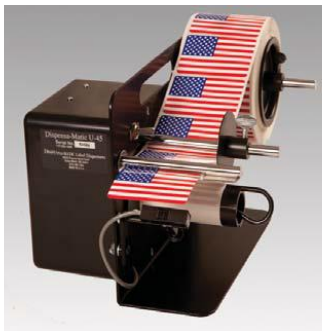
**\$2964**



### 3. Dispensa-matic "U-25"

NEW, LOW COST Label Dispenser! Power advance for roll labels to 2.5" width. Tension guide is standard for thin labels. **With Photo-eye**

**\$615**



**4. Dispensa-matic "U-45"** Power advance for one-up computer forms, or printed labels in rolls 3/8" to 4-1/2" wide at 6" per second speed.

**High Speed version** 11" per second speed for ANY length label! **With Photo-eye**

**\$804 (Standard)**

**\$844 (High Speed)**



**5. Dispensa-matic "U-60"** High Speed power advance for larger labels in rolls up to 6" wide, at 9" per second. **With Photo-eye**

**\$898**



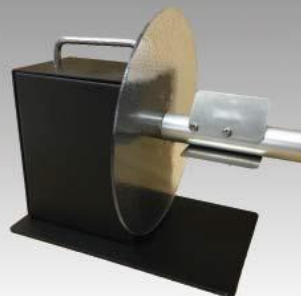
**6. Simple Simon**  
manually operated,  
precision made metal  
dispenser for all types  
of roll labels, sharp plate  
for thin labels.

**Simple Simon 4"**

**\$102**

**Simple Simon-W 6-3/4"**

**\$115**



**7. Rewind-O-Matic**  
Simple, yet effective  
label re-winder. Up to 6"  
width. Variable speed/  
torque. 3" core adapter  
plates and flange  
included!

**\$574**



**"6-II" \$979, "10-II" \$1,074, "16-II" \$1,155**

**8. Dispensa-Matic "6-II, 10-II, and 16-II"** – for roll or fan-fold labels to 5.5", 9.5", and 15.5" widths. Does not wind up waste, and loads VERY quickly. Best for large diameter rolls, and where constant speed is needed. (6" per second advance.) With Photo-eye



**\$88**

**\$75**

**\$102**

**9. DML-Convenient, Easy to use, Durable, and Economical** are a few of the words used to describe our new line of manual dispensers, the DML series. 6.5" Max roll Dia. 3" Core adapters available \$2.00

**DML 450 4.5", DML 850 8.5", and DML 1250 12.5"**

We dispense most labels without any difficulty. When using with Mylar, foil, acetate or very thin labels, try our sharp edge plate. We can provide other modifications, if necessary.

**A full 3 year parts and labor warranty** covers each unit against manufacturing defect. We provide full service and parts at our plant if needed. Only limited service is ever necessary.

**21 Day Trial** is offered on all units. Limit one per customer. Payment to be made by credit card. Full refund will be issued once machine has been received back in like-new condition.

All units are in stock and can be shipped promptly upon receipt of your order. Shipment is usually made by UPS, but when requested we ship Express Mail, Air Freight, or other expedited dispatch.



4181 Sladeview Crescent, Unit 51  
Mississauga, ON L5L 5R2 [navitek@navitage.com](mailto:navitek@navitage.com)